

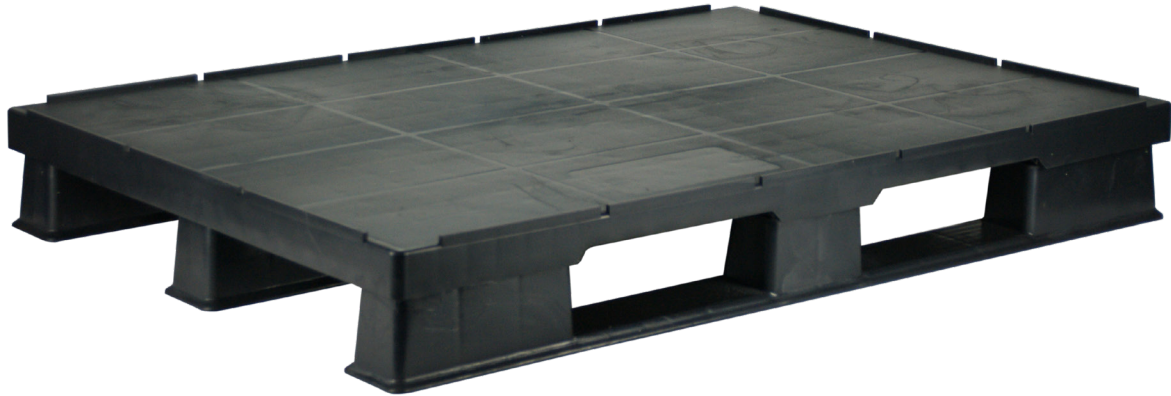


## SECUPAL - runner pallet

800 x 1200 mm

With interchangeable runners with rim and iron reinforcement  
Made from 100% recycled polyethylene

RECYCLEN



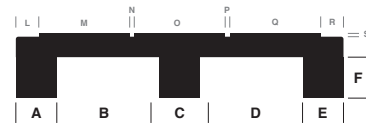
Sensible recycling products protect the environment

### technical specifications

size	800 x 1200 mm
height	150 mm
weight	26 kg
runners	interchangeable
rim	strength 6 mm
upper deck	closed
static load	5000 kg
dynamic load	1500 kg
high rack	up to max. 1500 kg*
material	100% PE recyclate
standard colour	black

These values are approximate  
All sizes are in mm

\* with an evenly distributed load on the pallet. The pallet must be tested with the load before use on the rack.



A	B	C	D	E	F		
100	250	100	250	100	102		
L	M	N	O	P	Q	R	S
56	222	11	222	11	222	56	8



G	H	I	J	K
245	277	156	277	245
T	U	V	W	X
56	207	11	210	56

The SECUPAL pallet is extremely flexible due to the interchangeable runners and in case of any damages quickly to fix. Iron reinforcement makes the pallet additionally suitable for use in high rack. The pallet is suitable for food contact, easy to clean and has a long service life. Upon request we emboss, print, dye or manufacture the pallet to your individual liking.

**Wandel Packaging Group Recyclen GmbH** Industriepark 6, 74706 Osterburken

FON +49 (0) 6291/64 17 - 0 ■ FAX +49 (0) 6291/64 17 - 17 ■ MAIL [recyclen@wandel-group.com](mailto:recyclen@wandel-group.com) ■ WEB [www.wandel-group.com](http://www.wandel-group.com)  
Geschäftsführer: Markus Wandel, Stefan Wandel ■ Amtsgericht Stuttgart HRB 777095 ■ AGB: [agb.wandel-group.com](http://agb.wandel-group.com)

Unternehmen der Wandel Packaging Group:

**Wandel Packaging Group Blow Moulding GmbH** Kanister  
**Wandel Packaging Group Recyclen GmbH** Kunststoffpaletten

**Plastikpack France GmbH & Co. KG** Kanister  
**Huttenlocher GmbH** Primärpackmittel